

## Product Instructions

### 100 series (98-07) Land Cruiser Interior Tire Carrier

#### Product Overview

The tire carrier consists of 4 main pieces and the optional MOLLE storage panel. 2 uprights, an adjustable cross section and the handle assembly with urethane cone.

Along with the supplied hardware you will be reusing the factory 3rd row seat mount bolts and seat belt bolt.

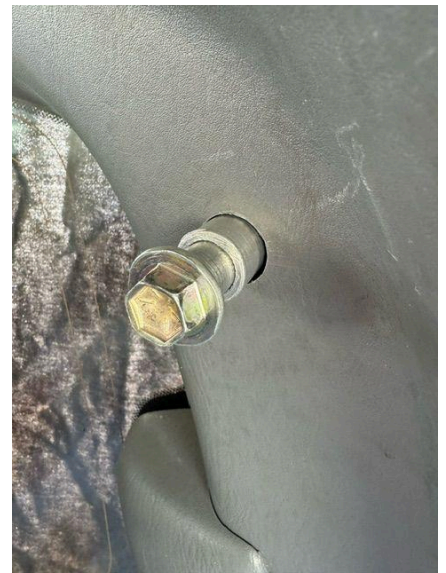
#### Tool list-

- 13mm socket
- 10mm socket
- 14mm socket
- T20 Torx
- Socket driver
- Phillips screwdriver
- Small flat head screwdriver
- 13mm wrench
- Tape measure

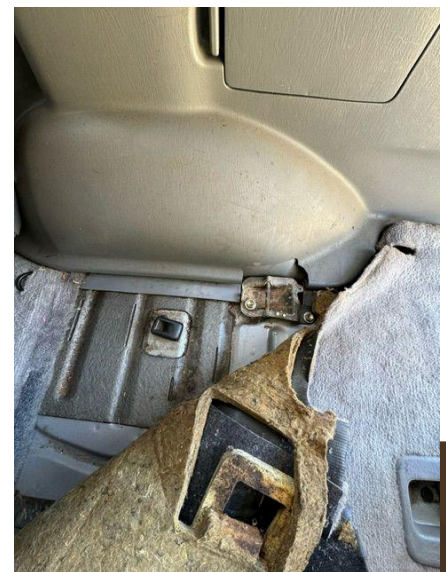


## Step 1: Prep vehicle

Remove 3rd row grab handle and seat belt. Using a small flathead screwdriver find the clip inside the 3rd row seat belt hole and push it out of the way so your seatbelt bolt and large spacer doesn't hit during install.



Remove front outboard seat mounts. You'll need to pull the carpet back to access one of the front seat mount bolts and depending on your truck model you'll need to keep the carpet pulled back to install the forward upright.



## Step 2: Install forward upright

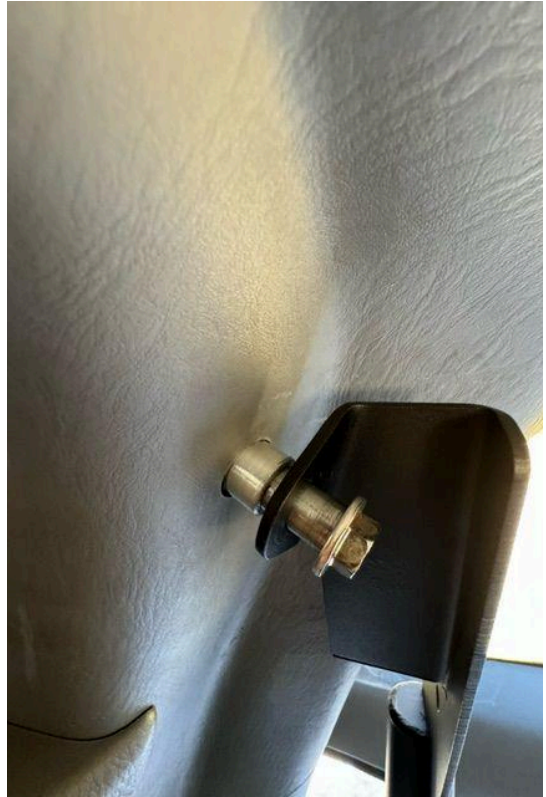


Set the forward upright in place as shown and install the top M6 bolts and small spacers first. Next, slide the lower mount into place till the lower bolt hole lines up and install the lower factory bolt. For vertical grab handles (shown) you must have the carpet pulled back and install the top bolts first. Leave all hardware loose enough for adjustment, you may need it later in the install.



### Step 3: Install rear upright

Set upright into place and install the large spacer and factory seat belt bolt first. Now install the lower factory seat mount bolts. Again, leave these somewhat loose allowing for minor adjustment later.



### Step 4: Install MOLLE panel (if applicable)

Slide the MOLLE panel in behind the uprights and install as shown using only the top two M8 bolts, nuts and washers. Leave these bolts loose. The bottom install bolts are also the bolts for the cross section which will be installed in the next step.



### Step 5: Measure for tire size and install cross section

Grab your spare and set it on its side against a flat surface such as a wall, tool box, etc. as shown. Now measure out from that surface and eyeball your tire size. Remember the size written on your tire or what's claimed by the manufacturer is not always the true size. The goal here is to get a rough measurement so you can set the cross section in the correct place for your tire size, this can always be adjusted easily later. Take that measurement and cut it in half, that'll be the height off the floor that you set your cross section to. Example: This tire measures out to 33.5".  $33.5"/2=16.75"$ . Set your cross section to 16.75" off the ground. This doesn't have to be perfect but it'll get you a good starting point.

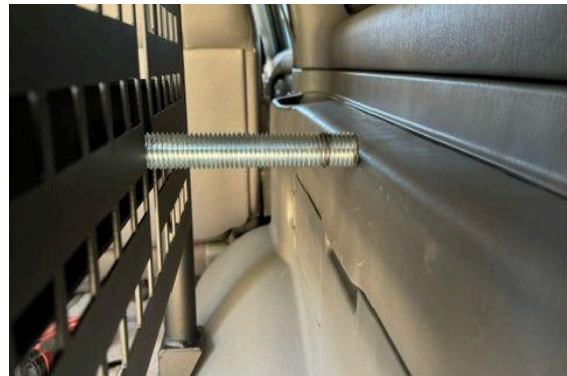




Install the cross section using the remaining M8 hardware and set to your measured height. This is where the adjustment comes in, you may need to adjust the uprights in or out till the cross section bolts line up and it moves freely up and down. Once the cross section is in and adjusted you may now fully tighten all hardware.

## Step 6: Install Spare tire and Handle

Install the urethane cone on your handle in the orientation shown. You may need to mount your wheel facing in or out depending on the shape of the wheel and the offset. Make sure the urethane cone rests squarely in the wheel bore and that there is no interference between your wheel and handle. Although it will fit the majority of wheels, we cannot guarantee that the handle will fit every wheel out there. If there is contact between the handle and the wheel you may need to slightly bend the handle till it clears the wheel or space the handle away from the urethane cone using a spacer or washers. (not supplied). Also, at this time make sure to check that the treads on your handle do not contact our interior panel when fully tightened (shown below). This is unlikely but could happen on some low offset wheels. You will need to flip the spare around or trim the length of the threaded handle.



7

*The install is now complete. Thank you so much for purchasing our products, we appreciate each and every one of you. Please contact us with any questions, concerns or feedback!*

